

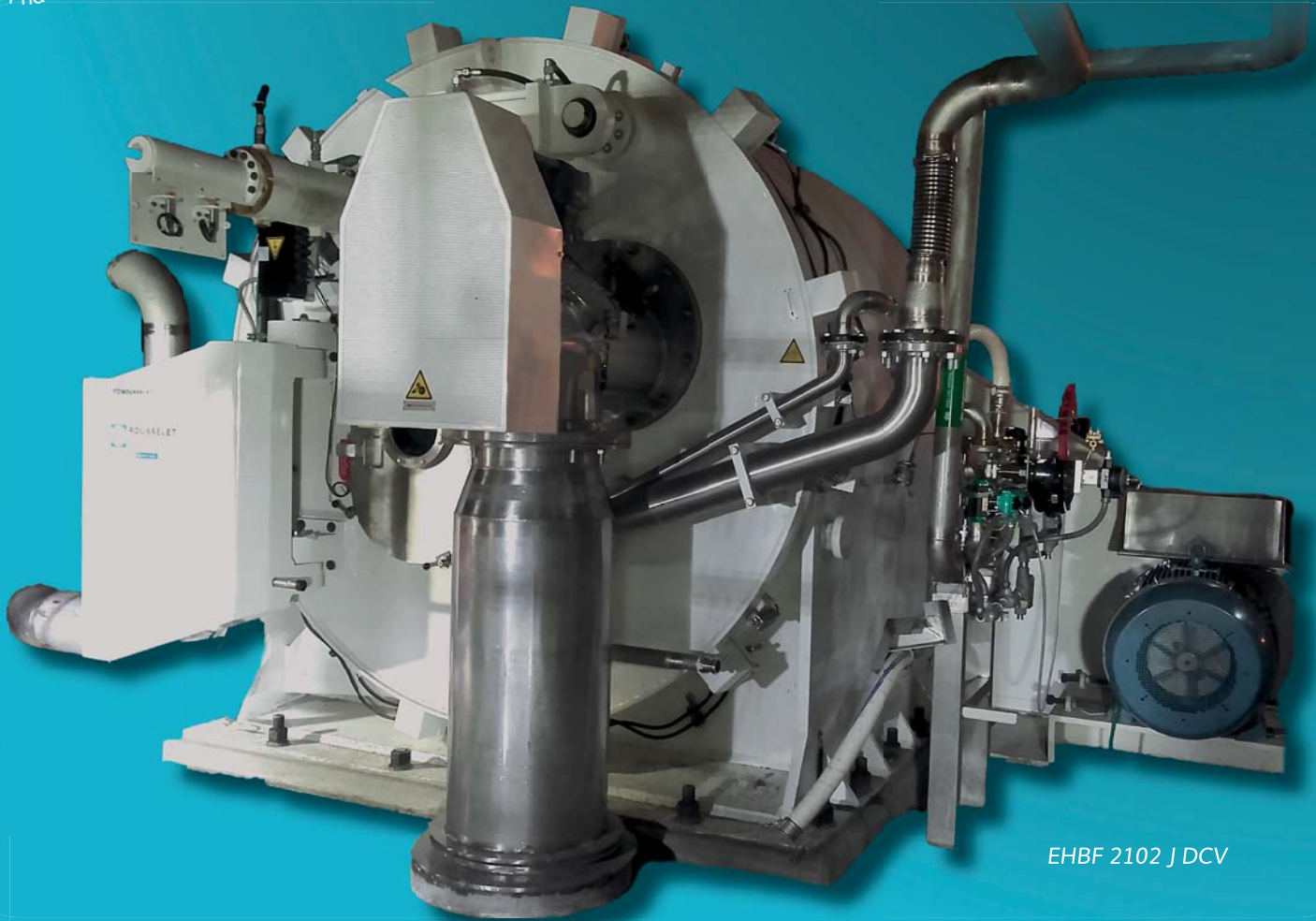
# HORIZONTAL AXIS PEELER CENTRIFUGES Type EH



Food industry



Chemicals & Pharmaceuticals



EHB 2102 J DCV

## KEY FEATURES OF EH TYPE CENTRIFUGES



### PRODUCTIVITY

- Ideal for mono product applications.
- Large diameter baskets with great useful volumes.
- Optimized cycle times (in some cases all cycle steps can be performed at high speed).



### EFFICIENCY

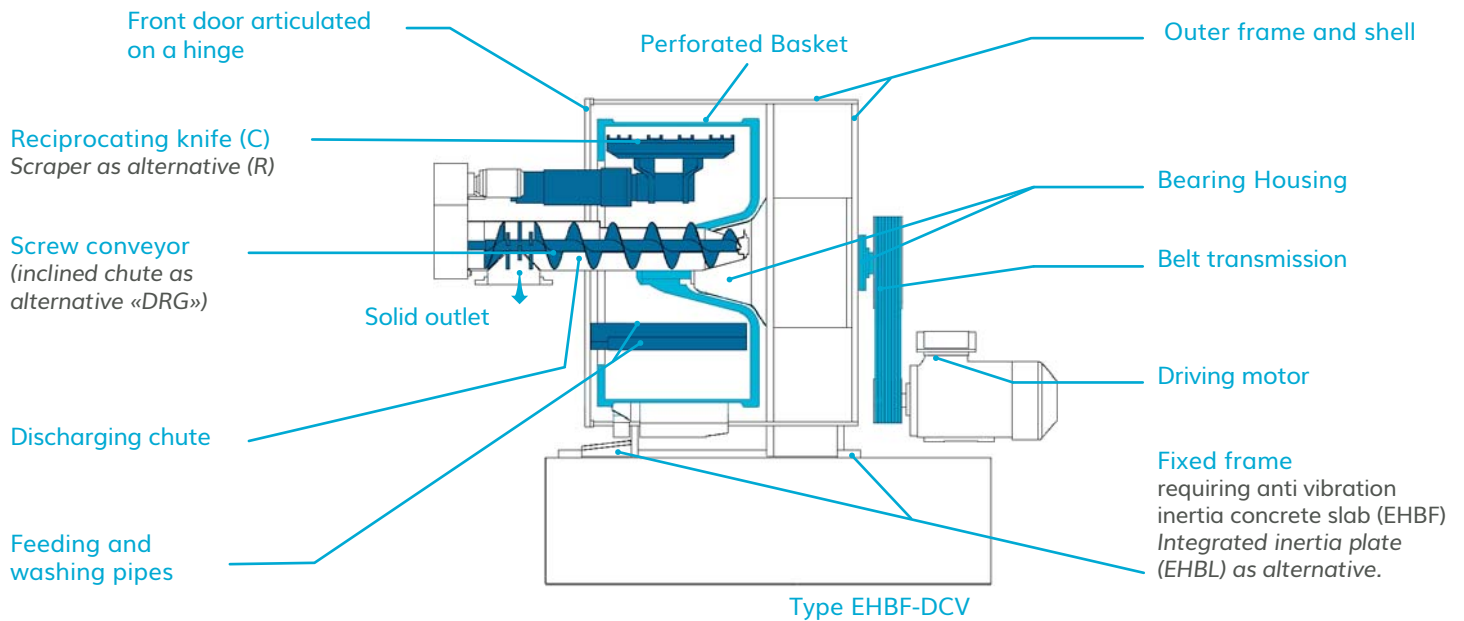
- Due to the high centrifugal forces generated, these centrifuges can achieve maximum cake dryness.



### RELIABILITY

- Required (EHB) or integrated (EHL) significant inertia mass.
- Outer casing design and assembly principle with fixed frame.
- Excellent stability and superior mechanical performance.

# GENERAL DESIGN OF EH TYPE CENTRIFUGES



## TECHNICAL CHARACTERISTICS OF EH CENTRIFUGES

Type EH	Basket (standard data)						
	∅ mm	Depth mm	Useful volume l	Maximum load kg	Filtration area m <sup>2</sup>	Maximum speed rpm	Centrifugal force «G»
1322	1320	720	440	550	3	1235	1130
1662	1660	950	890	1110	5	1000	930
1762	1760	980	1040	1300	5.4	950	890
2102	2100	980	1500	1900	6.5	850	850
2102 J	2100	1120	1730	2100	7.4	850	850

Smaller capacity models : see leaflets C8 and C4.



### ADDITIONAL AND OPTIONAL EQUIPMENT

- Cake washing pipe.
- Cake detector.
- Residual heel removal device.
- Overflow liquid discharge.
- Skimmer pipe.
- Various materials of construction (stainless steels, alloys...) or coatings, (HALAR, rubber, ...) and gasket materials.
- Tight or explosion-proof electrical equipment (ATEX compliance in the EC).
- Vapor tightness for operation under inert gas blanketing.
- Inerting Control Systems and hydraulic siphon.

#### HEADQUARTERS

ROUSSELET ROBATEL  
45 Avenue Rhin et Danube  
Parc d'activité économique de Marenton  
07104 ANNONAY - FRANCE  
Tel. : +33 / (0) 4 75 69 22 11  
Fax : +33 / (0) 4 75 67 69 80  
E-mail : info@rousselet-robatel.com

#### UK

Rousselet UK Ltd  
Parkside House, 17 East Parade  
HARROGATE  
NORTH YORKSHIRE HG1 5LF  
Tel : + 44 (0)1 423 530 093  
Fax : + 44 (0)1 423 530 120  
E-mail : info@rousselet-robatel.com

#### CZECH REPUBLIC

Rousselet Robatel CZ  
Počernická 96  
CZ – 108 00 Praha 10  
Tel : +420 296 411 402  
Fax : +420 296 411 403  
E-mail : cz@rousselet-robatel.com

#### USA

Robatel Inc.  
703 West Housatonic Street  
PITTSFIELD  
MA 01201  
Tel : + 1 413 499 4818  
Fax : + 1 413 499 5648  
E-mail : sales@rousselet-robatel.us